

# RUBY MILL, MUMBAI

**Putzmeister**



**Customer**  
**VASCON ENGINEERS LTD.**

**Site address**  
**RUBY MILLS COMPOUND,**  
Tulsi pipeline road,  
Next to Rupa rail college,  
Dadar(W), Mumbai.

**Type of Project**  
**COMMERCIAL BUILDING PROJECT**  
Total Height of the Building – 185 Mtrs  
Height of the Building – 112 Mtrs (as On 20/10/09)

**Number of Putzmeister Equipments at site**  
MX 32-4T stationary placer booms - 2 nos  
BSA 1408 HD Pumps - 2 nos  
Pumping hrs of 1408 HD pumps - 524 hrs  
( sr no – 211800512)  
- 355 hrs  
( sr no – 211800815)

**TOTAL CONCRETE PUMPED** - 50,000 M<sup>3</sup>  
**PROJECT STARTED ON** - SEP.2007  
**COMPLETION WILL BE** - OCT.2010



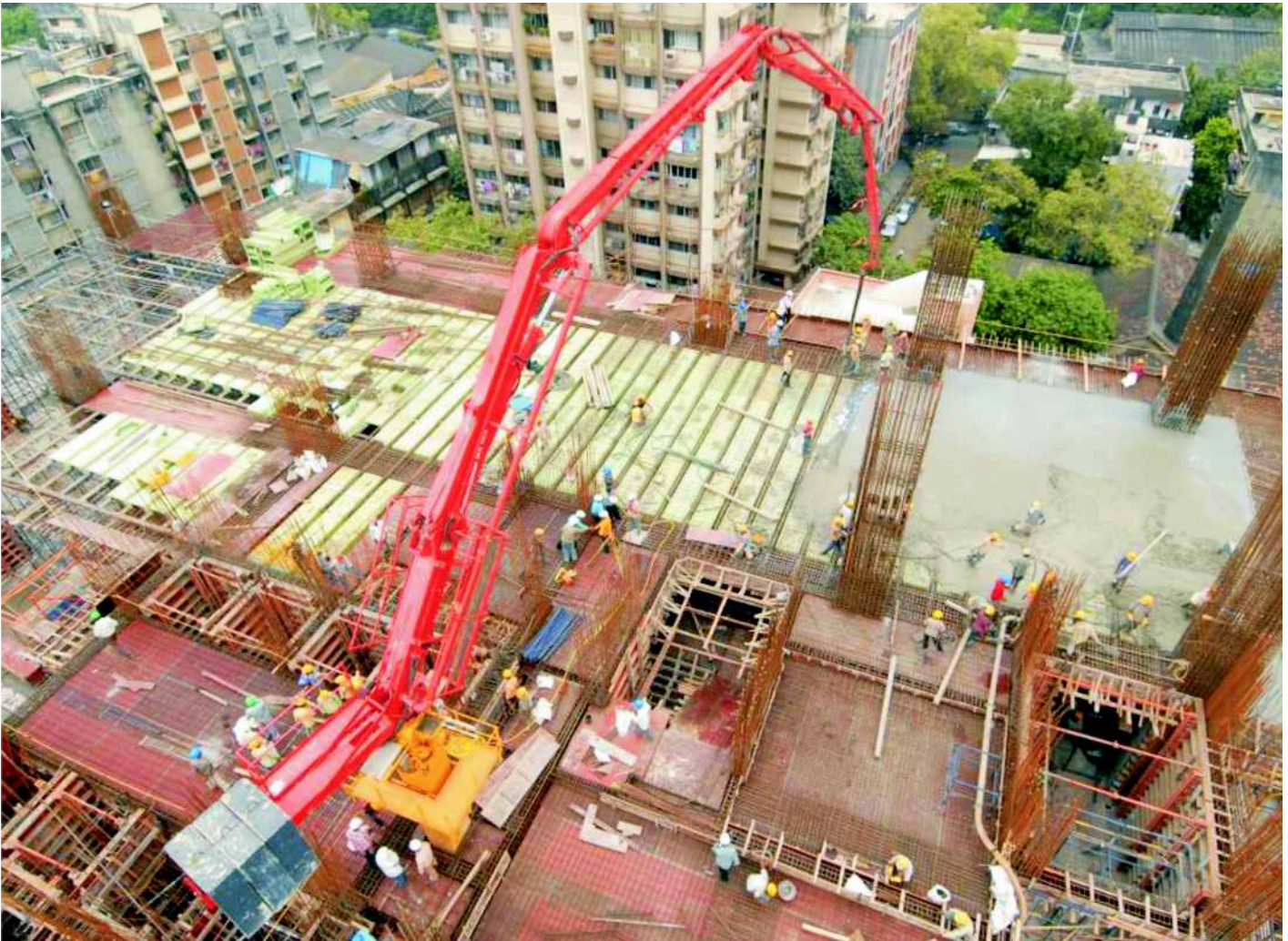
**MX Boom in operation**



BSA 1408 HD PUMP AT SITE



BSA 1408 HD PUMPS SETUP AT SITE



**CONCRETE DETAILS:**

Every slab total concrete (includes slab, column and core wall) - 1100 m<sup>3</sup>.  
 Type of concrete used  
     For slab                     - M 40  
     For column                 - M 50  
     For core wall               - M 50  
 Average slump maintained   - 140 mm  
 Concrete pushing pressure   - 200 - 220 bar  
 2 slabs completed in every month.

**MAINTENANCE :**

No break down till date

Concrete pipeline life – 30,000m<sup>3</sup> ( for MX booms)  
 Till date no wear parts replaced.( except Upper bearing assy)

**Climbing of MX booms:**

Climbing of MX booms carried out at every alternate slabs.  
 Time taken for each climbing is max 1½ hrs.

**Cleaning process :**

Cleaning of concrete done by forward pumping of water with sponge ball / cleaning pig.  
 No cleaning station available.



Under Construction



Final View



Under Construction

## Putzmeister

Putzmeister Concrete Machines Pvt Ltd.

Plot No. N4, Phase IV, Verna Industrial Estate, Verna Salcete, Goa 403 722.

Tel : +91 (832) 669 6000 Fax : +91 (832) 669 6300 Web : [www.pmw.co.in](http://www.pmw.co.in)

© All rights reserved

Putzmeister Concrete Machines Pvt. Ltd. is a 100% subsidiary of Putzmeister, Germany